

| | | |
|--|--|---------------------------------|
| 1. Incident Name VTTX – HazMat Release Near Waterway | 2. Prepared by: (name) on-scene responder Date: day of spill Time: 1130 | INCIDENT BRIEFING ICS 201-CG |
|--|--|---------------------------------|

3. Map/Sketch (include sketch, showing the total area of operations, the incident site/area, overflight results, trajectories, impacted shorelines, or other graphics depicting situational and response status)



4. Current Situation:

At approximately 1000, a hazardous liquid pipeline was struck and ruptured by some construction equipment. The equipment operator immediately contacted the fire department, who contacted the county sheriff office. The Regional Response Center was notified of the incident by the fire chief (initial on-scene commander) by 1020 and reported that the spill was likely to extend in to the Crystal River. By 1030, the call was made to treat the incident as an expanding incident, requiring the activation of the local Incident Management Team. Coast Guard and DEQ personnel were activated to staff the IMT. A Coast Guard small boat and a Coast Guard Aux boat were in the area and able to respond, quickly establishing a safety zone around the area downstream of the spill. While there is not a heavy flow of hazardous liquid at this point, it is highly visible when it touches the water and the Sheriff's Office is concerned about public inquiries. Nutmeg Pipeline Company, the owner of ruptured pipe, has been contacted and has enacted their initial response protocol, which includes calling in their "basic response team". They have confirmed the product as "Nutmeg Crude". There are zero injuries to any response personnel.

| | | | | | |
|---|--|--|--|--|--|
| 1. Incident Name VTTX – HazMat Release Near Waterway | | 2. Prepared by: (name) on-scene responder Date: day of spill Time: 1130 | | INCIDENT BRIEFING ICS 201-CG | |
| 5. Initial Response Objectives, Current Actions, Planned Actions | | | | | |
| 1030 | Response Objectives: | | | | |
| | 1. Control the source of the leak. | | | | |
| | 2. Take precautions to protect sensitive natural areas and wildlife in the area near Animas Creek | | | | |
| | 3. Monitor the flow of spilled materials and identify any needs for downriver evacuations or anyone living or working on or near the water. | | | | |
| | 4. Establish a unified command and activate the regional Incident Management Team to handle the expanding incident | | | | |
| | 5. Communicate with the public regarding any known hazards to life or property | | | | |
| | 6. Maintain safety zone to keep recreational boaters away from contaminated waters. | | | | |
| 1100 | CIRs set at any responder injury or death, any oil contact with civilian vessel or major infrastructure (downriver bridge), Any oil in contact with animals, any ignition or flashing of the oil, | | | | |
| 1130 | Right now the damaged pipe has been patched but is still leaking at a slow rate – enough that product is flowing into Animas Creek. | | | | |
| 1100 | Nutmeg Pipeline estimates the time to fix and completely stop the source will be 48 hours. | | | | |
| 1030 | They did confirm the liquid is “Nutmeg Crude” | | | | |
| 1100 | Staging area set up at Pt Partridge for on-water oil response assets. Pt Partridge is public park but has a really good dock that can handle commercial equipment. Minor concern about public interest near the staging area since the city has not allowed for closing of the park yet. There are a couple of county sheriff officers posted there to help organize incoming equipment but a IMT person should be assigned to relieve them as soon as possible. | | | | |
| 1100 | The county has offered the use of their multi-use building for the stand up of the Incident Command Post. Incoming personnel have been instructed to meet there. The facility is well equipped for a response post, including wifi and plenty of parking. | | | | |
| 1130 | Still don't have final list for the IMT positions that were filled. Known filled positions are indicated on the Organization Chart in section 6 of the IAP | | | | |
| 1130 | Updated known resources on scene and expected for arrival by morning. Tried to get the Clean River advanced resources earlier but they were out of town and wouldn't make arrival and set-up today before dark. They are currently slated to arrive sometime overnight and will be ready for assignment first thing in the morning. | | | | |
| 1100 | Operational Periods set for 24 hours and will begin at 0900 each day. We are currently in the initial response, planning for the next Operational period, which will be from 0900 tomorrow to 0859 the following day. | | | | |
| 1200 | In-Brief for oncoming Incident Management Team – will be held at ICP where section workspaces will need to be assigned. | | | | |

1. Incident Name
VTTX – HazMat Release Near Waterway

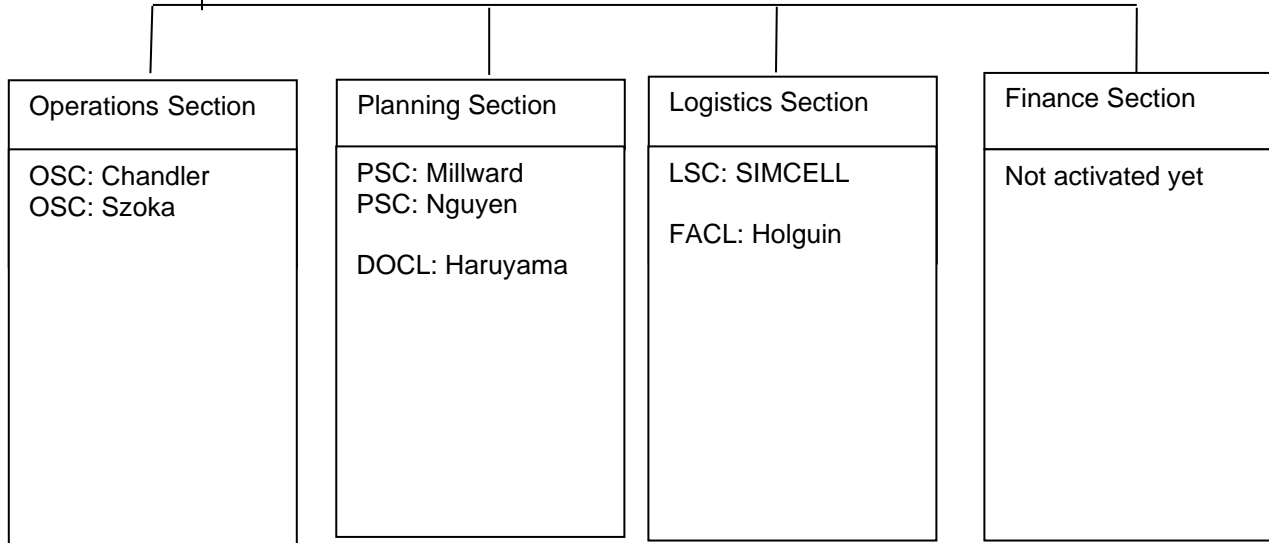
2. Prepared by: (name) on-scene responder
Date: day of spill Time: 1130

INCIDENT BRIEFING
ICS 201-CG

6. Organization (fill in additional appropriate organization)

IC: SIMCELL _____

— Safety Officer Horan _____
— Liaison Officer Coder _____
— Public Information Officer not activated yet _____



| 1. Incident Name VTTX – HazMat Release Near Waterway | | 2. Prepared by: (name) on-scene responder Date: day of spill Time: 1130 | | | INCIDENT BRIEFING ICS 201-CG | |
|--|---|--|----------|--------------|--|--|
| 7. Resources Summary | | | | | | |
| Resource | Resource Identifier/ Number of persons | Date Time Ordered | ETA | On-Scene (X) | NOTES: (Location/Assignment/Status) | |
| IMT Personnel | | 1000 | variable | | Still need total list of requested positions to fill. | |
| CG 33120 | 4 persons | | | X | O/S, working safety zone, STA able to supply one boat and crew for 24 hours of coverage then need additional support | |
| Aux Flotilla 2-4 #503 | 3 persons | | | X | O/S until 1600 today, working safety zone, back at 0830 | |
| Aux Flotilla 2-4 #684 | 3 persons | | 0830 | | Requested at staging area by 0830 | |
| Aux Flotilla 2-4 #412 | 3 persons | | 0830 | | Requested at staging area by 0830 | |
| Riverbank County Sheriff | unknown | | | X | Conducting traffic operations | |
| Riverbank County Fire Department | 8 persons | | | X | Incident mgmt team, coordinating field ops from temporary command post – in process of transitioning to new ICP location | |
| Riverbank County EMS | 2 persons | | standby | | Alerted to incident, in standby mode | |
| Clean Rivers Basic Response Team | 20 persons | | | x | | |
| Work boat laying boom near shore | 6 persons | | | x | | |
| Pipeline Company Near Shore Cleanup Crew – no on-water operations overnight | | | | | | |
| Work Crew #1 | 7 persons | | | X | Available again tomorrow | |
| SCAT #1 | 7 persons | | | X | Available again tomorrow | |
| Work Boat | 2 persons | | | X | Available again tomorrow | |
| Vac Truck #27 | 2 persons | | | X | Will run continuously overnight | |
| Clean Rivers “Advanced Response Team” and associated equipment – will be available at staging area by 0530 for next Op Period | | | | | | |
| Shore Crew #1 | 10 persons | | | | | |
| Shore Crew #2 | 10 persons | | | | | |
| Absorbent Pads 500 bales | | | | | | |
| Absorbent Sweep 10,000' | | | | | | |
| 24" containment boom 6,000' | | | | | | |
| 18" containment boom 10,000' | | | | | | |
| Clean Rivers Belt Skimmer | 3 persons | | | | | |
| Clean Rivers Type 2 Vortex Skimmer | 9 persons | | | | | |
| Tug Alero | 4 persons | | | | | |
| Bunker Barge | 1 person | | | | | |
| Clean Rivers Boat #1 | 3 persons | | | | | |