
Unit 6:

Expanding Incident Activity



FEMA

Visual 6.1

Unit Terminal Objective

Using a scenario identify changes to EOC activation level, staffing, and resources and information requirements for an expanding incident



FEMA

Visual 6.2

Unit Enabling Objectives

- **Explain Incident Complexity and Complex Incidents**
- **Describe the impact of incident complexity on resource requirements, information requirements, activation level and EOC staffing**



FEMA

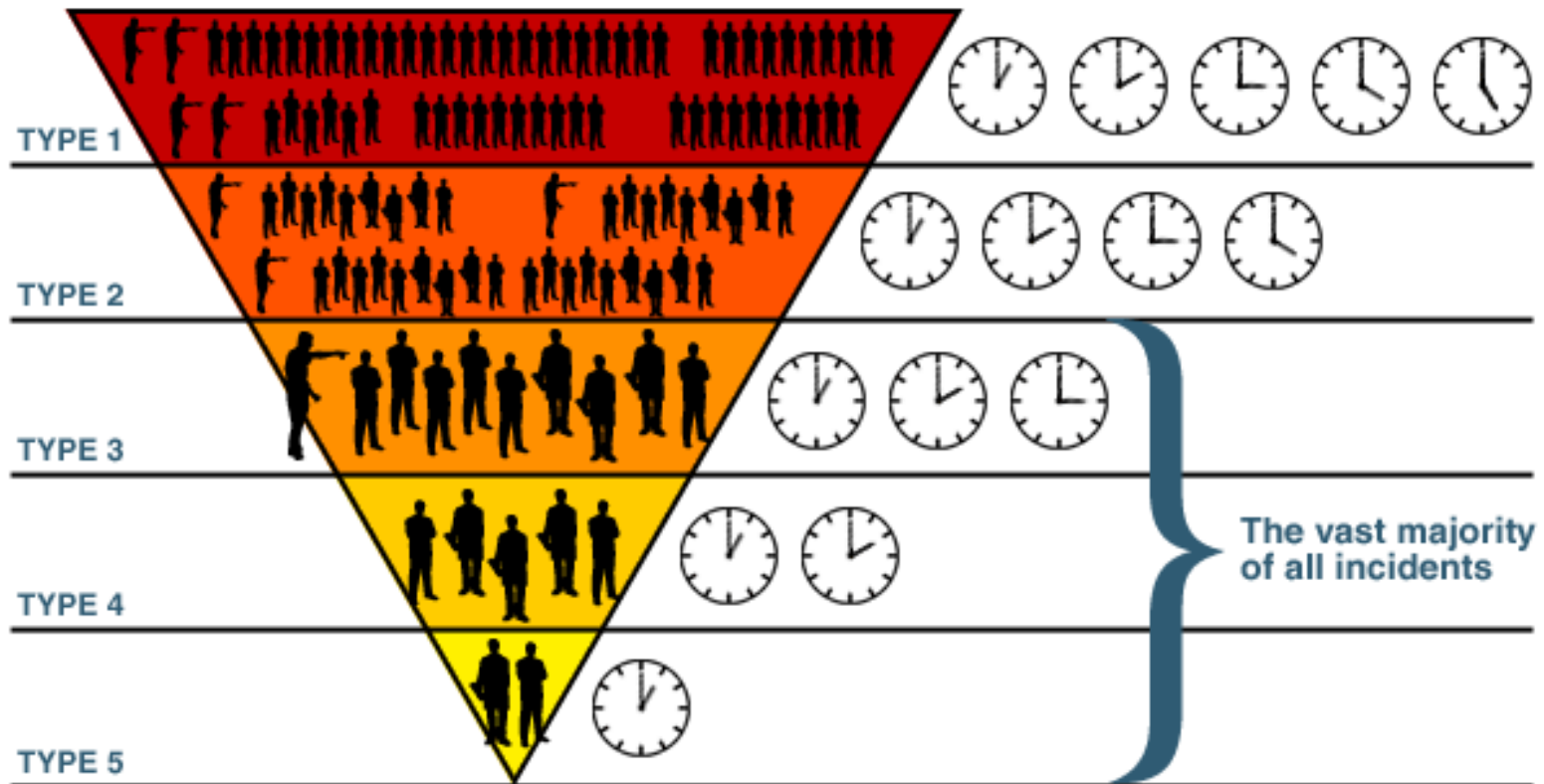
Discussion: Expanding Incidents

What adjustments might an EOC need to make in response to an ongoing and expanding incident?



FEMA

Incident Complexity



FEMA

Characteristics of Complex Incidents

- Time is of the essence (time criticality)
- The situation is unstable
- The incident has the potential to expand rapidly
- Communications and information may be incomplete
- Staff are not necessarily experienced in managing expanding incidents



FEMA

Complexity Analysis Factors

- **Size and duration**
- **Resource requirements**
- **Impacts**
- **Safety**
- **Hazardous materials**
- **Weather and environment**
- **Cascading events**
- **Crime scene (including terrorism)**
- **Political, community and media**
- **Jurisdictional boundaries**



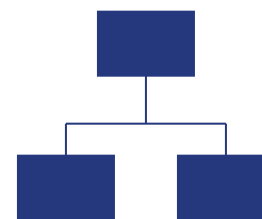
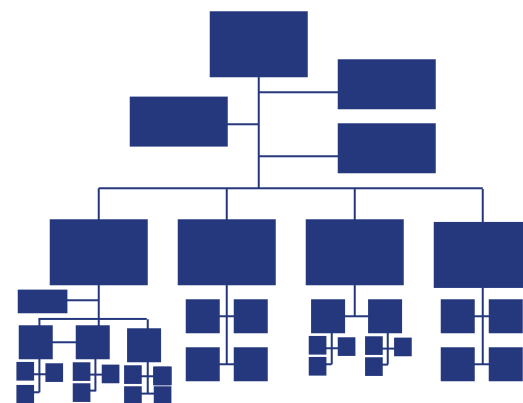
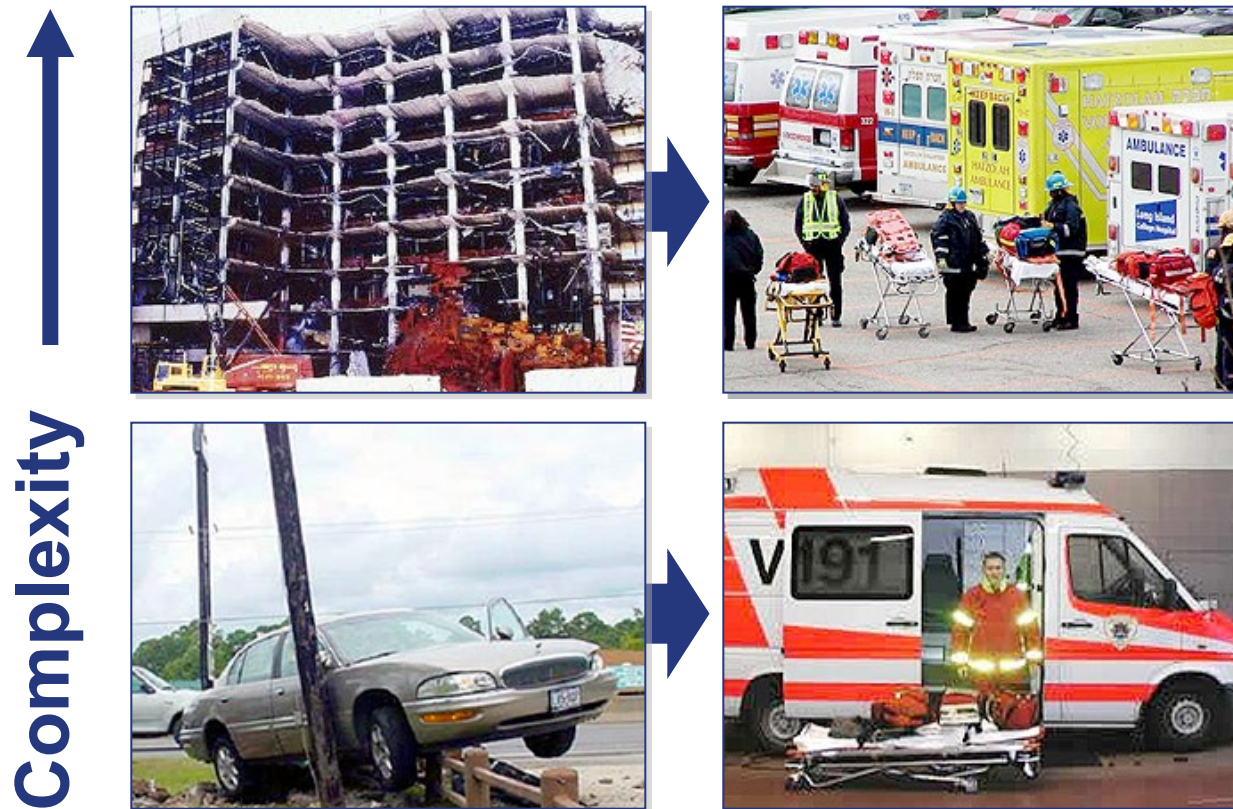
FEMA

Incident Complexity and Resource Needs

Incident Complexity

Resource Needs

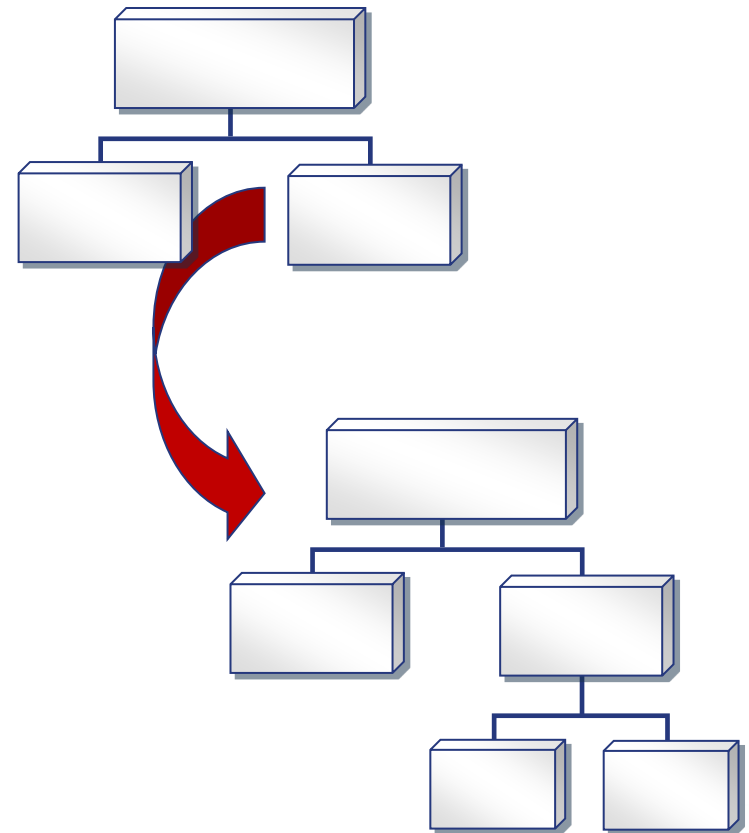
ICS Structure



FEMA

Modular Organization

EOC organizational structure and staffing can expand or contract as needed based on the type, size, duration, scope and complexity of the incident.



FEMA

Review: NIMS EOC Activation Levels

3 – Normal Operations/Steady State

2 – Enhanced Steady State/Partial Activation

1 – Full Activation



FEMA



Activity 6.1: EOC Expansion

Allotted Time: 1 hour



FEMA

Visual 6.11

Objectives Review

- **What are Incident Complexity and Complex Incidents?**
- **What is the impact of incident complexity on resource requirements, information requirements, activation level and EOC staffing?**



FEMA